



Photo Editor Image Menu

Crop: After you have used the select tool to block off a section of the picture, you can choose the Crop option to eliminate any part of the picture you have not selected.

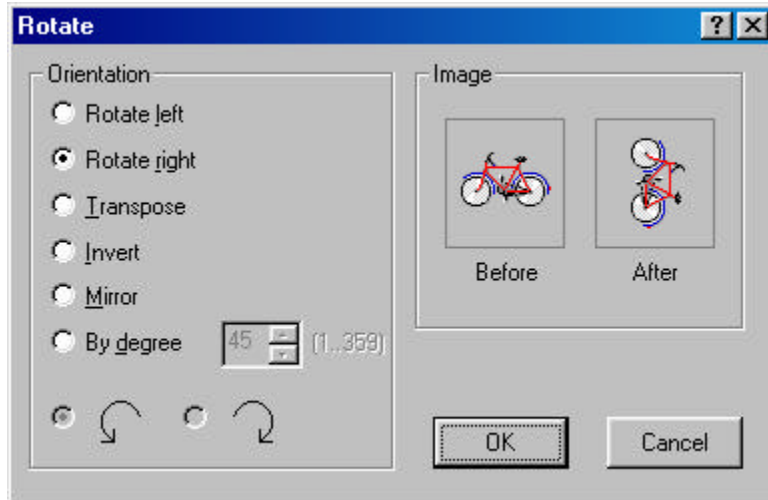


In the samples above, I cropped the picture, with only the chair remaining.

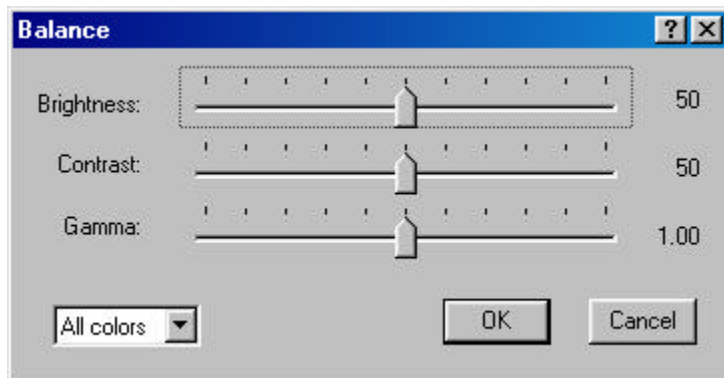
Resize: Allows you to change the size of the picture. In general, you want to resize to a smaller amount, since increasing the size leads to distortion.

 <p>Width: 3.80 100 % Height: 2.85 100 % <input type="checkbox"/> Allow distortion Units: Inches <input checked="" type="checkbox"/> Smooth OK Cancel</p>	<p>Notice the difference between choosing pixels and inches as the unit of measurement. As you get more used to using pixels to determine size, you may come to prefer using that type of measurement.</p>	 <p>Width: 365 100 % Height: 274 100 % <input type="checkbox"/> Allow distortion Units: Pixels <input checked="" type="checkbox"/> Smooth OK Cancel</p>
--	--	--

Rotate: Turn the picture around or flip it.



Balance: Change settings to improve picture quality.



Notes: